

INDOFINE Chemical Company, Inc.

121 Stryker Lane, Bldg. 30, Suite 1 • Hillsborough, NJ 08844 • U.S.A.

Phone: (908) 359-6778 • FAX: (908) 359-1179

website: www.indofinechemical.com

e-mail: chemical@indofinechemical.com

CERTIFICATE OF ANALYSIS

Catalog Number: 06-1370

Product Name: **2-AMINO-4-CHLOROPHENOL-6-SULFONIC ACID**

CAS Number: [88-23-3]

Lot Number: 1507637

Chemical Formula: C₆H₆ClNO₄S

Molecular Weight: 223.63

Appearance: Brown powder

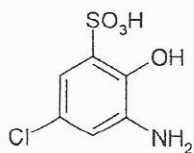
Solubility: Soluble in DMSO

TLC: n-Hexane:Ethyl acetate (8:2)

NMR Spectrum: Enclosed (conforms to the structure)

Storage: Store in a cool, dry place

Purity(HPLC): 99.62%





INDOFINE Chemical Company, Inc.

121 Stryker Lane, Bldg. 30, Suite 1 • Hillsborough, NJ 08844 • U.S.A.

Phone: (908) 359-6778 • FAX: (908) 359-1179

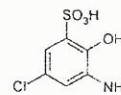
website: www.indofinechemical.com

e-mail: chemical@indofinechemical.com

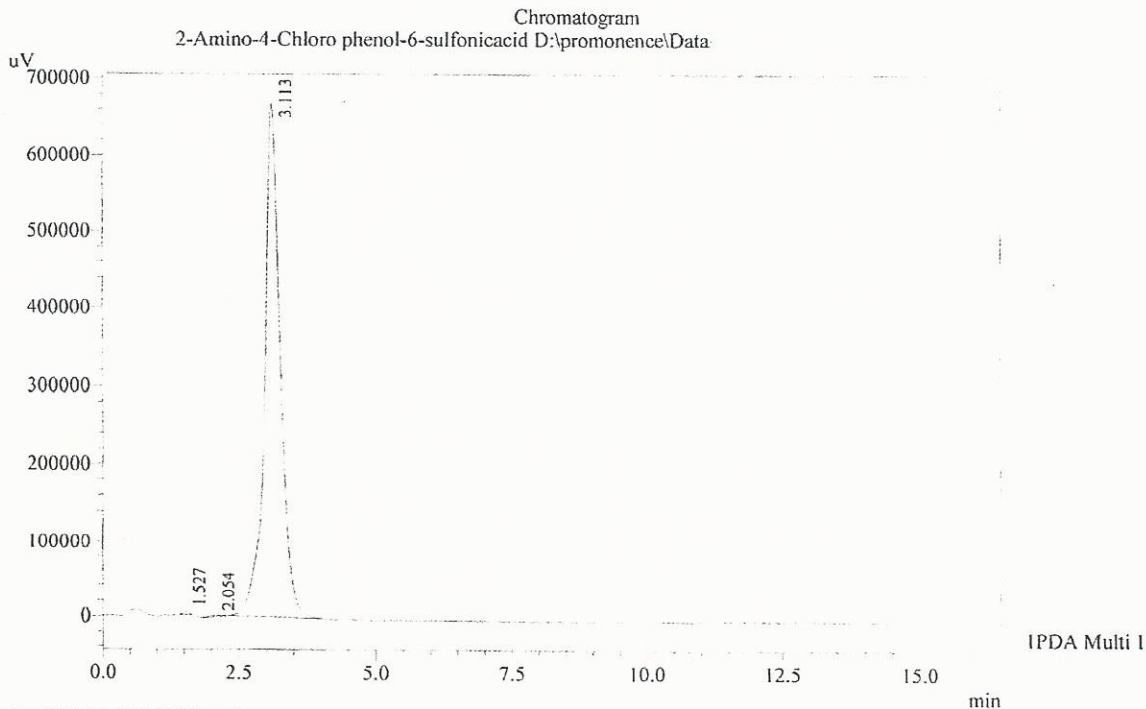
HPLC ANALYSIS

Acquired by : Admin
Sample Name : 2-Amino-4-Chloro phenol-6-sulfonicacid
Sample ID : Lot no:1507637
Injection Volume : 20 uL
Data Filename : 200815N.lcd
Method Filename : Linear Isocratic M.lcm

Catalog No.: 06-1370
Product Name: 2-Amino-4-chlorophenol-6-sulfonic acid
Lot No.: 1507637



Column : Inertsil-ODS-3V, (150mm x4.6mm 5.0μ)
Flow : 1.000 mL/min.
Mobile Phase : A(20% of 0.05% TFA in water) B(80% of Acetonitrile)



1 PDA Multi 1 / 230nm 4nm

PeakTable

PDA Ch1 230nm 4nm

Peak#	Name	Ret. Time	Area	Area %	Relative Retention Time
1	RT:1.526	1.527	29722	0.22	0.49
2	RT:2.051	2.054	20966	0.16	0.66
3	2-NH2-4-ClPhenol-6-sulfon	3.113	13306032	99.62	1.00
Total			13356720	100.00	



INDOFINE Chemical Company, Inc.

121 Stryker Lane, Bldg. 30, Suite 1 • Hillsborough, NJ 08844 • U.S.A.

Phone: (908) 359-6778 • FAX: (908) 359-1179

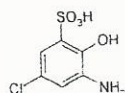
website: www.indofinechemical.com

e-mail: chemical@indofinechemical.com

Catalog No.: 06-1370

Product Name: 2-Amino-4-chlorophenol-6-sulfonic acid

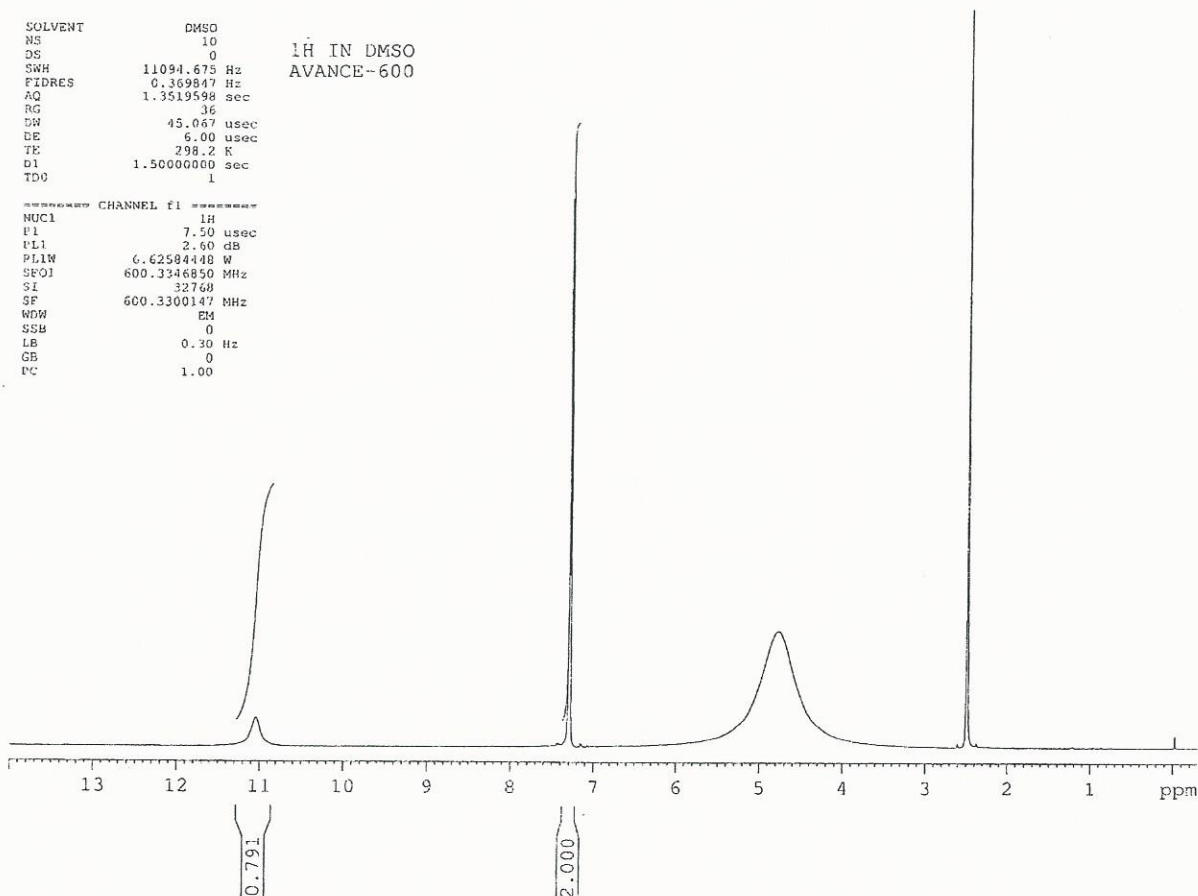
Lot No.: 1507637



SOLVENT DMSO
NS 10
DS 0
SWH 11094.675 Hz
FIDRES 0.369847 Hz
AQ 1.3519598 sec
RG 36
DJW 45.067 usec
DE 6.00 usec
TE 298.2 K
D1 1.5000000 sec
TDO 1

1H IN DMSO
AVANCE-600

----- CHANNEL f1 -----
NUC1 1H
P1 7.50 usec
PL1 2.60 dB
PL1W 6.62584448 W
SFO1 600.3346850 MHz
SI 32768
SF 600.3300147 MHz
WDW EM
SSB 0
LB 0.30 Hz
GB 0
PC 1.00





INDOFINE Chemical Company, Inc.

121 Stryker Lane, Bldg. 30, Suite 1 • Hillsborough, NJ 08844 • U.S.A.

Phone: (908) 359-6778 • FAX: (908) 359-1179

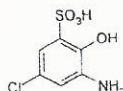
website: www.indofinechemical.com

e-mail: chemical@indofinechemical.com

Catalog No.: 06-1370

Product Name: 2-Amino-4-chlorophenol-6-sulfonic acid

Lot No.: 1507637



SOLVENT DMSO
NS 10
DS 0
SWH 11094.675 Hz
FIDRES 0.369847 Hz
AQ 1.3519598 sec
RG 36
DW 45.067 usec
DE 6.00 usec
TE 298.2 K
D1 1.5000000 sec
TDC 1

1H IN DMSO
AVANCE-600

***** CHANNEL f1 *****
NUC1 1H
P1 7.50 usec
PL1 2.60 dB
PL1W 6.62584448 W
SF01 600.3346850 MHz
SI 32768
SF 600.3300147 MHz
WDW EM
SSB 0
LB 0.30 Hz
GB 0
PC 1.00

